

# Dentate Protocol

## PRE-SURGERY DAY

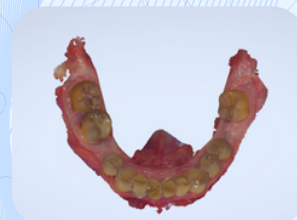
### STEP 1

#### Prepare Patient's Digital Scans to Help Planning

Perform full scans of the upper and lower arches to capture the patient's dentate anatomy. Additionally, complete a bite registration scan with the teeth in occlusion to record the patient's natural bite.



*Full Upper Scan*



*Full Lower Scan*



*Scan bite*

### STEP 2

#### Take Standardized Photos with Dentures In

Take photos with dentures in place show the patient's natural smile and facial profile.

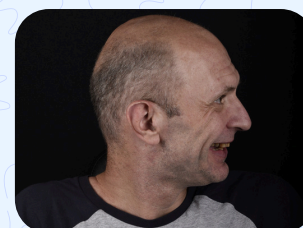
*Ensure no eyeglasses, hats, or anything that blocks the face is worn*



*Natural smile*



*Frontal Retracted*



*Profile shot (Left & Right)*

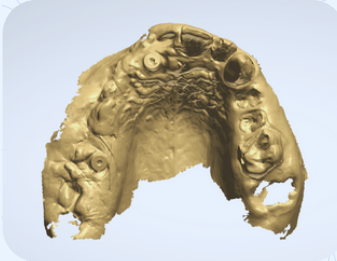
# Dentate Protocol

## SURGERY DAY

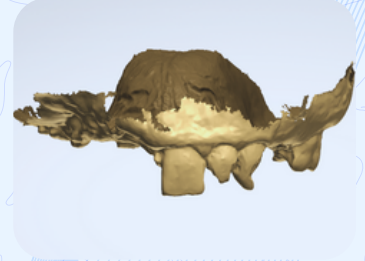
### STEP 1

#### Mid-Procedure Scans for Implant Placement

After placing 2-3 initial implants, attach scan markers and perform a scan to capture implant positions, remaining teeth, and surrounding soft tissue.



*Upper Midway Occlusal*

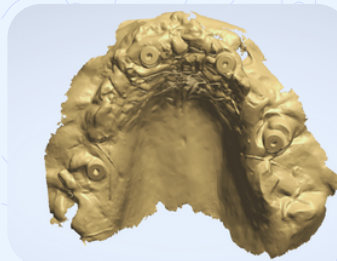


*Upper Midway Labial*

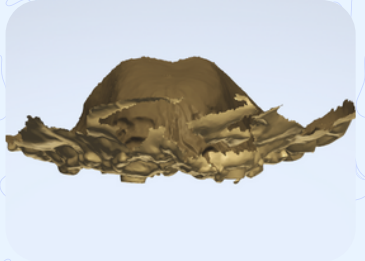
### STEP 2

#### Final Scans to Capture Markers and Soft Tissue

Once all implants are in place, attach scan markers and capture a scan that clearly shows scan markers and all soft tissue.



*Final Occlusal*

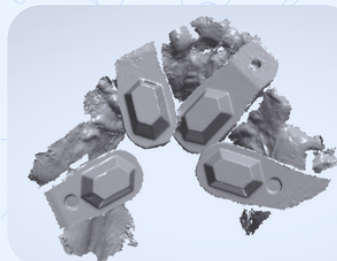


*Final Labial*

### STEP 3

#### Final Implant Position using Photogrammetry

Capture both upper and lower final scans using photogrammetry after all implants have been placed and photogrammetry-specific markers are attached.



*Upper final scan using Photogrammetry*



*Lower final scan using Photogrammetry*