

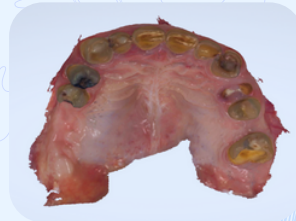
Dentate Protocol

PRE-SURGERY DAY

STEP 1

Prepare Patient's Digital Scans to Help Planning

Perform full scans of the upper and lower arches to capture the patient's dentate anatomy. Additionally, complete a bite registration scan with the teeth in occlusion to record the patient's natural bite.



Full Upper Scan



Full Lower Scan



Scan bite

STEP 2

Take Standardized Photos with Dentures In

Take photos with dentures in place show the patient's natural smile and facial profile.

Ensure no eyeglasses, hats, or anything that blocks the face is worn



Natural smile



Frontal Retracted



Profile shot (Left & Right)

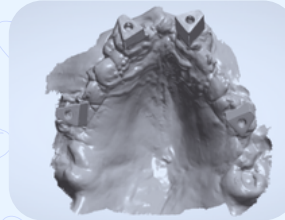
Dentate Protocol

SURGERY DAY

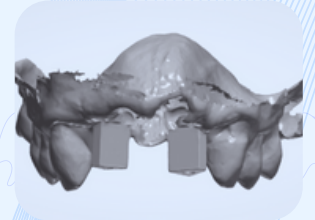
STEP 1

Mid-Procedure Scans for Implant Placement

After placing 2-3 initial implants, attach scan markers and perform a scan to capture implant positions, remaining teeth, and surrounding soft tissue.



Upper Midway Occlusal

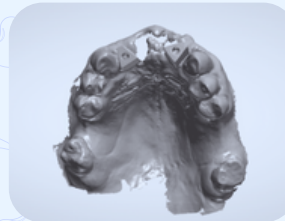


Upper Midway Labial

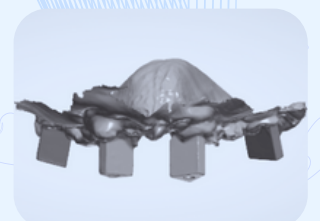
STEP 2

Final Scans to Capture Markers and Soft Tissue

Once all implants are in place, attach scan markers and capture a scan that clearly shows scan markers and all soft tissue.



Final Occlusal

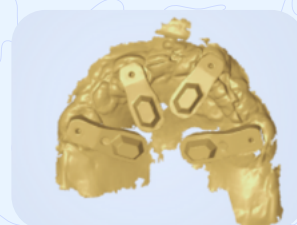


Final Labial

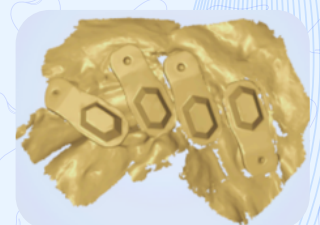
STEP 3

Final Implant Position using Photogrammetry

Capture both upper and lower final scans using photogrammetry after all implants have been placed and photogrammetry-specific markers are attached.



Upper final scan using Photogrammetry



Lower final scan using Photogrammetry