

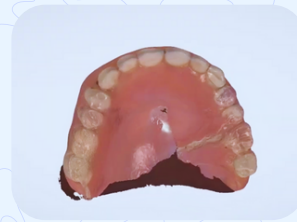
Edentulous Protocol

PRE-SURGERY DAY

STEP 1

Prepare Patient's Digital Scans to Help Planning

360° scan of the upper and lower dentures (if available), including inside and outside surfaces. Capture the bite with dentures in to record the patient's normal biting position.



Full Upper Denture



Full Lower Denture

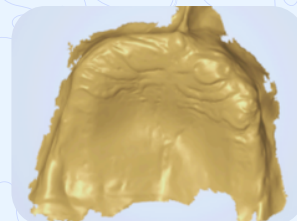


Scan bite with dentures

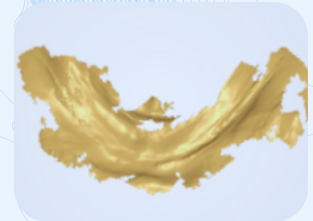
STEP 2

Scan Upper & Lower Tissues

Capture detailed 3D scans of the upper and lower edentulous ridges to record soft tissue anatomy for accurate planning and prosthesis fit.



Upper tissue scan



Lower tissue scan

STEP 3

Take Standardized Photos with Dentures In

Take photos with dentures in place show the patient's natural smile and facial profile.

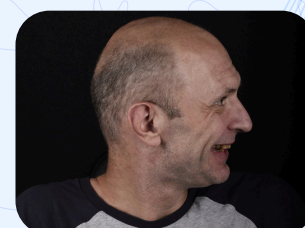
Ensure no eyeglasses, hats, or anything that blocks the face is worn.



Natural smile



Frontal Retracted



Profile shot (Left & Right)

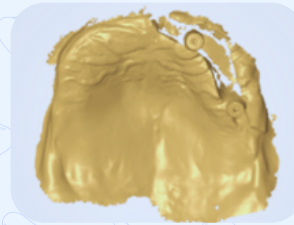
Edentulous Protocol

SURGERY DAY

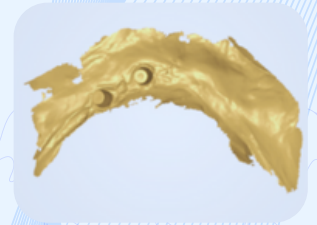
STEP 1

Mid-Procedure Scans for Implant Placement

Scan the upper and lower arches once 2 to 3 implants have been placed and scan markers are attached.



Upper midway scan

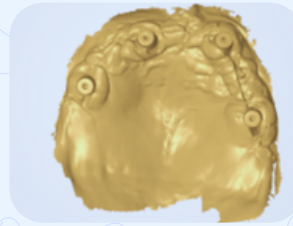


Lower midway scan

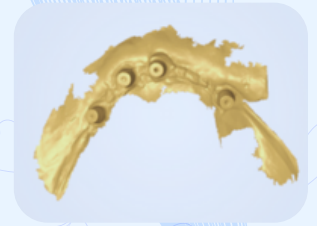
STEP 2

Final Implant Position Scan

Scan both upper and lower arches at the final procedure after all implants have been placed and scan markers are attached.



Upper final scan

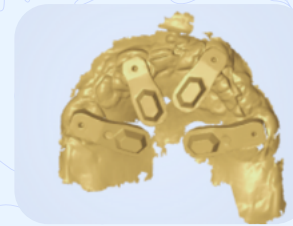


Lower final scan

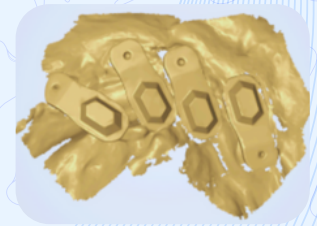
STEP 3

Final Implant Position using Photogrammetry

Capture both upper and lower final scans using photogrammetry after all implants have been placed and photogrammetry-specific markers are attached.



*Upper final scan
using Photogrammetry*



*Lower final scan
using Photogrammetry*